



HAND SANITIZER Production Process

01

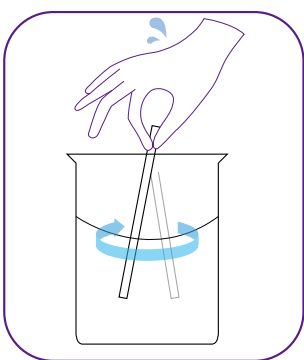
► Typical HAND SANITIZER Production Process

- 1) Hand sanitizer generally maintains an alcohol content of about 70%, and glycerin, fragrance, other moisturizing agents, thickeners, etc. are added to it and stirred to complete.
- 2) In the case of general hand sanitizer, the viscosity is very low, so it is easy to manufacture. But when you squeeze it in your hand, it flows like water and it is inconvenient to apply. In order to relieve this discomfort, a thickener is added to make a gel-type form that is easy to apply.
- 3) In the case of a small amount, it can be completed to some extent by mixing the ingredients by hand or shaking the container. However, when the production capacity increases and the viscosity increases, the mixing process is carried out using a large mixer.

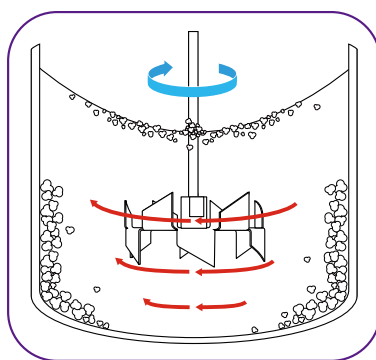
02

Problems with existing processes

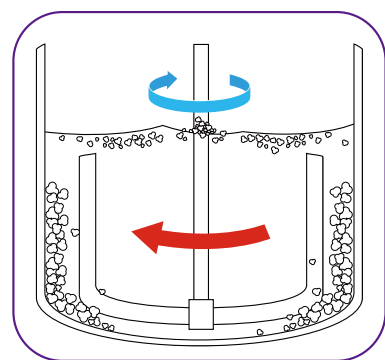
- 1) In the case of small-volume production, the production can be finished by stirring by hand or shaking the container after combining the materials, but if the production capacity increases and the viscosity increases by adding a thickener, a large-capacity mixer such as DISSOLVER or ANCHOR MIXER will be used to proceed with production.
- 2) However, when such a low-speed mixer is used in a mass production process, it takes a long time to dissolve the glycerin in alcohol, and the dispersion of the thickener is not perfect or takes a long time.
- 3) If production takes a long time, it adversely affects production and increases labor and other production costs, which reduces production efficiency. In addition, if the thickener is not completely dispersed, a foreign body sensation or foreign matter may appear when applied to the hand, which adversely affects the quality.



Existing low-volume production



When applying low-speed mixer to existing mass production



Even such a difficult process can be innovatively improved with MIXENMILL.
Please click the button below to receive more SOLUTION.

MORE SOLUTIONS

